

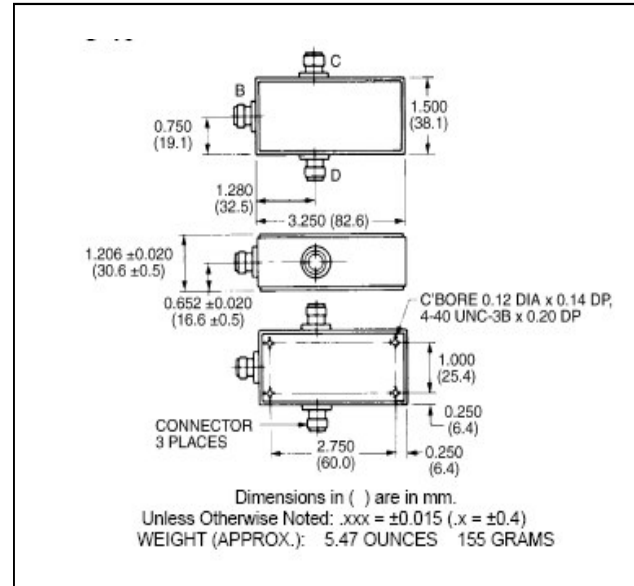
**Broadband Two-Way Power Divider,  
2 MHz - 2 GHz**

**H-8-4  
V2**

**Features**

- 11 Octave Coverage
- Low Loss - 1.25 dB Max
- High Isolation - 20dB Min

**C-19**



**Guaranteed Specifications: From -55°C to +85°C**

Frequency Range		30-3000 MHz
Insertion Loss (less coupling)	2-10 MHz	1.0 dB Max
	10-1000 MHz	1.0 dB Max
	1000 MHz-2 GHz	1.7 dB Max
Isolation	2-10 MHz	20 dB Min
	10-1000 MHz	25 dB Min
	1000 MHz-2 GHz	20 dB Min
Amplitude Balance	2-10 MHz	0.1 dB Max
	10-1000 MHz	0.1 dB Max
	1000 MHz-2 GHz	0.6 dB Max
VSWR (All Ports)	2-10 MHz	2.5:1 Max
	10-1000 MHz	1.3:1 Max
	1000 MHz-2 GHz	1.5:1 Max
Phase Balance	2-1000 MHz	2.5° Max
	1000 MHz-2 GHz	5° Max

**Operating Characteristics**

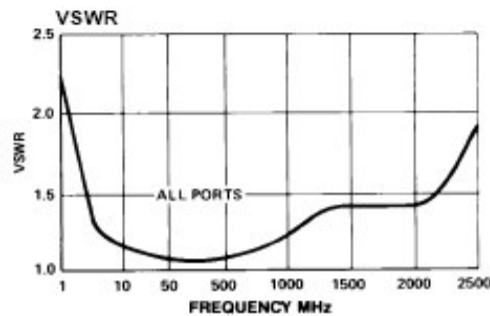
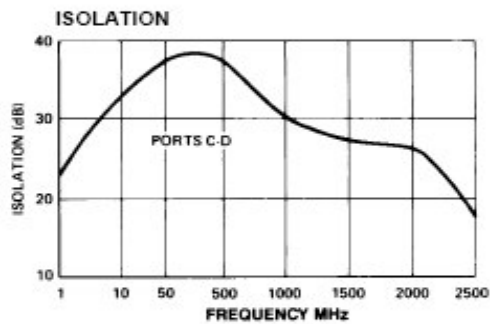
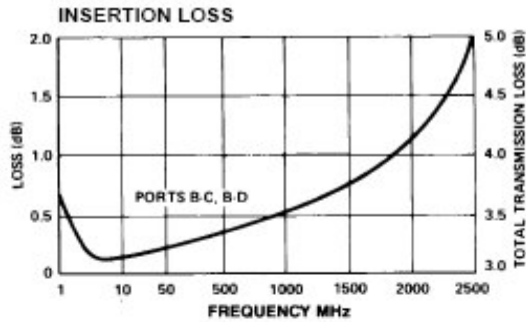
Parameter	Absolute Maximum
Impedance	50 Ohms Nominal
Maximum Power Rating Or Input Power	2.0 Watt Max
Internal Load Dissipation	0.5 Watt Max
Environmental MIL-STD-883 screening available.	

\* All specifications apply with 50 ohm source and load impedance.

**Broadband Two-Way Power Divider,  
2 MHz - 2 GHz**

**H-8-4  
V2**

**Typical Performance Curves**



**Ordering Information**

Part Number	Package
H-8-4 N	Connectorized
H-8-4 SMA	Connectorized
H-8-4 TNC	Connectorized
H-8-4 BNC	Connectorized

**Functional Diagram**

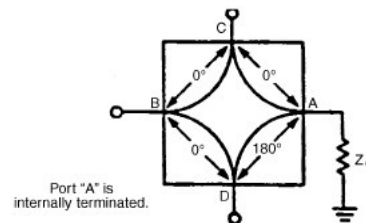


Figure 1. 2-Way, In-Phase (0°) Power Divider/Summer, or ISO-T